



PROFESSIONAL  
ART APPRAISAL

Verify this report at [www.proartappraisal.com](http://www.proartappraisal.com)

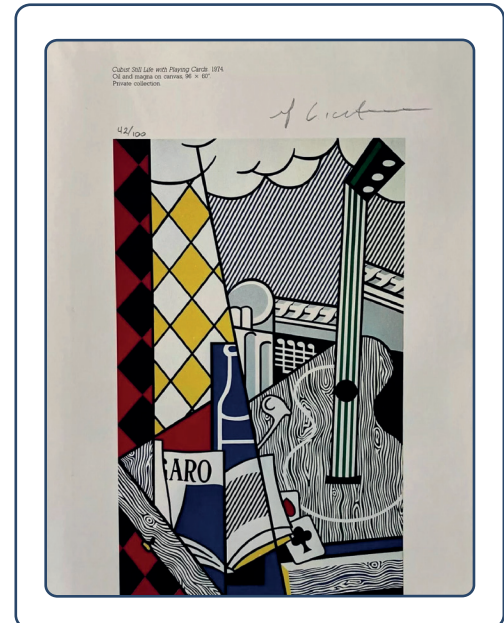
## APPRAISAL REPORT

Oct 26, 2020

Report Number: 335878

## Professional Art Appraisal Report

<b>Artist:</b>	Roy Lichtenstein
<b>Name of Print:</b>	Cubist Still Life with Playing Cards, 1974
<b>Print Size:</b>	22,5x29 cm
<b>Print Number:</b>	42/100
<b>Year of Print:</b>	1981
<b>Medium:</b>	Print
<b>Hand Signed:</b>	Roy Lichtenstein
<b>Appraisal Value:</b>	\$3,700



### WHAT IS AN APPRAISAL REPORT?

Art valuation, an art-specific subset of financial valuation, is the process of estimating the market value of works of art. As such, it is more of a financial rather than an aesthetic concern, however, subjective views of a cultural value play a part as well. Art valuation involves comparing data from multiple sources, such as art auction houses, private and corporate collectors, curators, art dealer activities, gallerists (gallery owners), experienced consultants, and specialized market analysts to arrive at a value.

Art valuation is accomplished not only for collection, investment, divestment, and financing purposes, but as part of estate valuations, for charitable contributions, for tax planning, insurance, and loan collateral purposes. This article deals with the valuation of works of fine art, especially contemporary art, at the top end of the international market, but similar principles apply to the valuation of less expensive art and antiques.

### CHECK REPORT

The results documented in this report refer only to the article described, and were obtained using the techniques and equipment used by Professional Art Appraisal at the time of examination.

For additional information and important limitations and disclaimers, please contact us at:  
[Info@proartappraisal.com](mailto:Info@proartappraisal.com)  
or [www.proartappraisal.com](http://www.proartappraisal.com)

