



PROFESSIONAL
ART APPRAISAL

Verify this report at www.proartappraisal.com

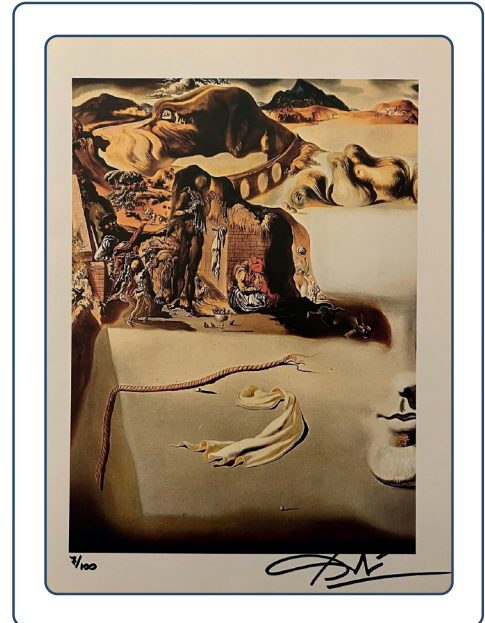
APPRAISAL REPORT

Jul 14, 2022

Report Number: 347516

Professional Art Appraisal Report

Artist:	Salvador Dalí
Name of Print:	Apparition of Face and Fruit Dish on a Beach, 1938
Print Size:	22x29,5 cm
Print Number:	7/100
Year of Print:	1974
Medium:	Print
Hand Signed:	Salvador Dalí
Appraisal Value:	\$3,800



WHAT IS AN APPRAISAL REPORT?

Art valuation, an art-specific subset of financial valuation, is the process of estimating the market value of works of art. As such, it is more of a financial rather than an aesthetic concern, however, subjective views of a cultural value play a part as well. Art valuation involves comparing data from multiple sources, such as art auction houses, private and corporate collectors, curators, art dealer activities, gallerists (gallery owners), experienced consultants, and specialized market analysts to arrive at a value.

Art valuation is accomplished not only for collection, investment, divestment, and financing purposes, but as part of estate valuations, for charitable contributions, for tax planning, insurance, and loan collateral purposes. This article deals with the valuation of works of fine art, especially contemporary art, at the top end of the international market, but similar principles apply to the valuation of less expensive art and antiques.

CHECK REPORT

The results documented in this report refer only to the article described, and were obtained using the techniques and equipment used by Professional Art Appraisal at the time of examination.

For additional information and important limitations and disclaimers, please contact us at:
Info@proartappraisal.com
or www.proartappraisal.com

